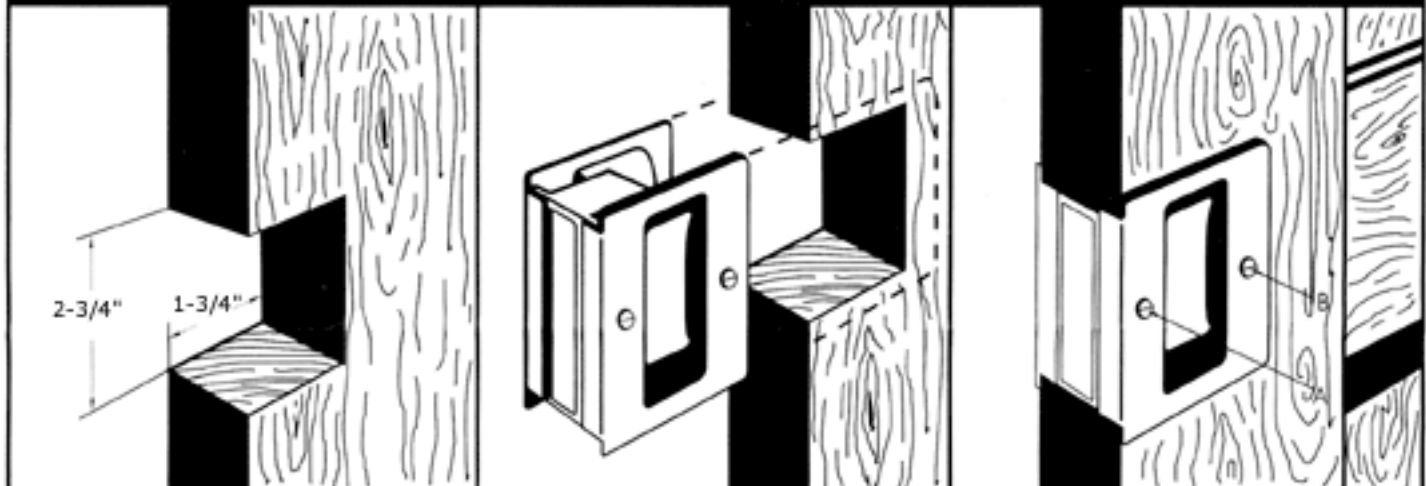


INSTALLATION INSTRUCTIONS

COMBINATION SLIDING DOORPULL AND LOCK



1 Cut one simple notch in door.

2 Slip pull into position as shown.

3 (A) Fasten machine screw which tightens and automatically aligns pull. (B) Insert wood screw and tighten.

INSTALLATION OF STRIKE PLATE FOR LOCKING SET ONLY

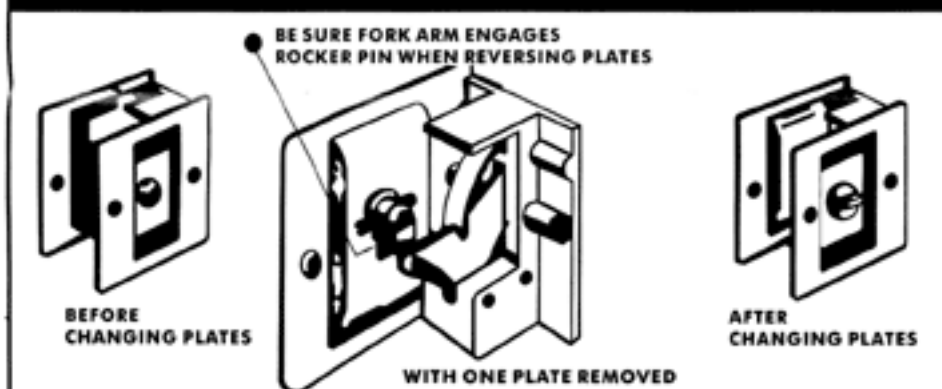


1 Mark and mortise strike on jamb to correspond to lock position on door.

2 Drill 15/16" diameter hole 1/2" deep in center of mortise.

3 Screw strike plate into position using #6 x 5/8" lg. Flat head wood screws.

TO ASSEMBLE AFTER REVERSING PLATES



When it is desirable to reverse outside plates on lock assembly, first remove machine screw on each side-change plates from side to side (making sure that fork arm engages rocker pin) and re-assemble.